

Welcome

Jonathan Bruno | Chief Executive Officer
Coalitions & Collaboratives | co-co.org



Instructions



Using Mentimeter

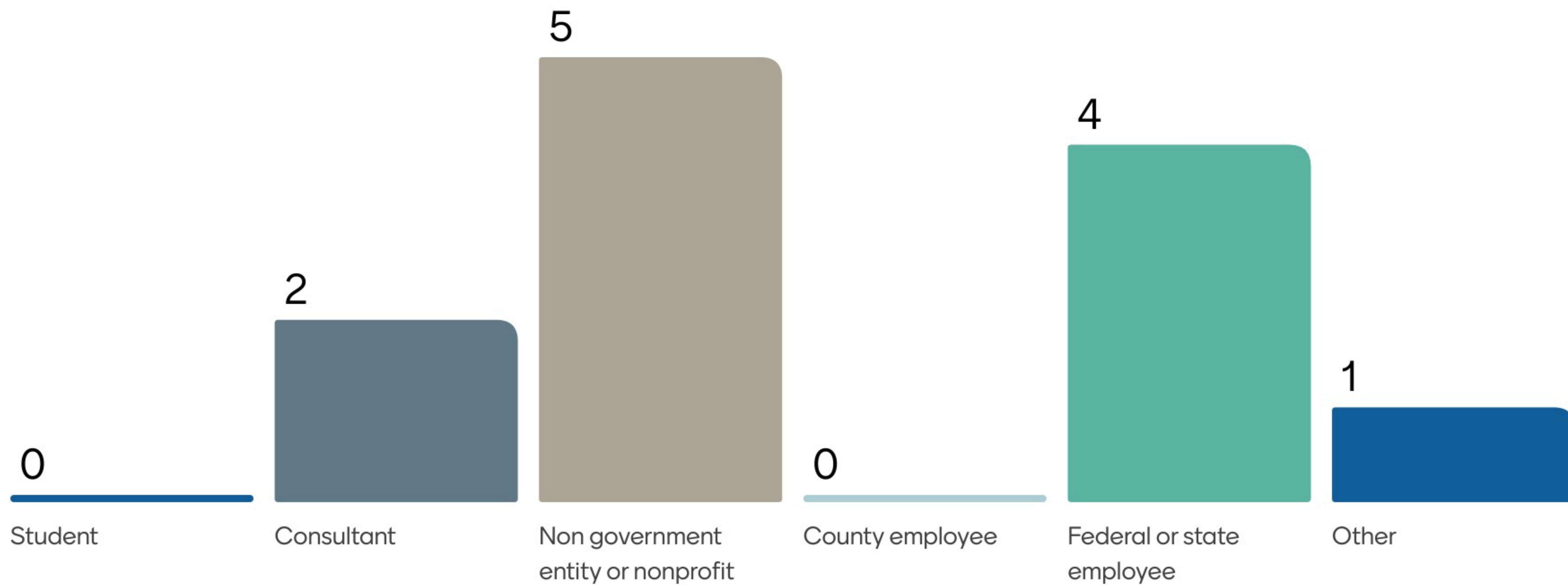
- Scan the QR code or enter menti.com into your computer's web browser
- Enter the code given in the QR box or info bar above
- Follow along and participate in the webinar



Discussions, Polling, Q&A

- Polling is anonymous. Please be respectful & professional.
- Please note we will try to address all questions and comments in the webinar
- Monitoring Zoom Q&A, but please consider adding to Menti first
- Webinar is being recorded, so drop questions in Zoom that will be transferred to Menti, if you have to leave early

I'm a



What geographic location are you joining us from?

16 responses



What do you hope to get from this webinar?

Writing a long term wildfire recovery plan

General learning and curiosity.

Understand what you are doing, tools for success

Public/private collaboration post-fire

Learn

To bolster my ability to help people and impact communities when my fellow human needs it most

Enhance my understanding of ATF and recovery efforts

Learn from others

What do you hope to get from this webinar?

I'd like to learn a bit about fire adaptation in a place I have little experience with

The 2021 Tamarack Fire devastated Markleeville CA and the nonprofit I work with hosts many tree planting events, I just want to learn more about what other people may be doing!

Creative ways to leverage unique community capabilities in recovery

Sara Tekula, Executive Director Kula Community Watershed Alliance



What are your community assets for disaster response?

41 responses



What role have you played in post-wildfire recovery?

Debris removal

water quality monitoring

Disaster assistance centers

USFS coordination and communications

Education on grant requirements and timelines

I have worked at all phases - from planning, grant management to tree planting and ecosystem on-the-ground work

Re-seeding

Inventory tree regeneration, coordinate replanting efforts

What role have you played in post-wildfire recovery?

Engineering and technical management for mitigation

Watershed assessment/baer and interagency coordination

tree planting, stream bank restoration

Emergency consultation with NOAA and FWS

BAER team

Monitoring efforts in burn scar, such as FMH/Common Stand Exams. Volunteer tree planting workdays, invasive species removal (cheatgrass postfire).

repair

Communicating w soil and water conservation districts

What role have you played in post-wildfire recovery?

Ensuring tribal input is included in actions



AN ISLAND UNTO OURSELVES: ACTIVATING COMMUNITY-LED WILDFIRE RECOVERY IN THE MOST ISOLATED PLACE ON EARTH

Lessons from Maui

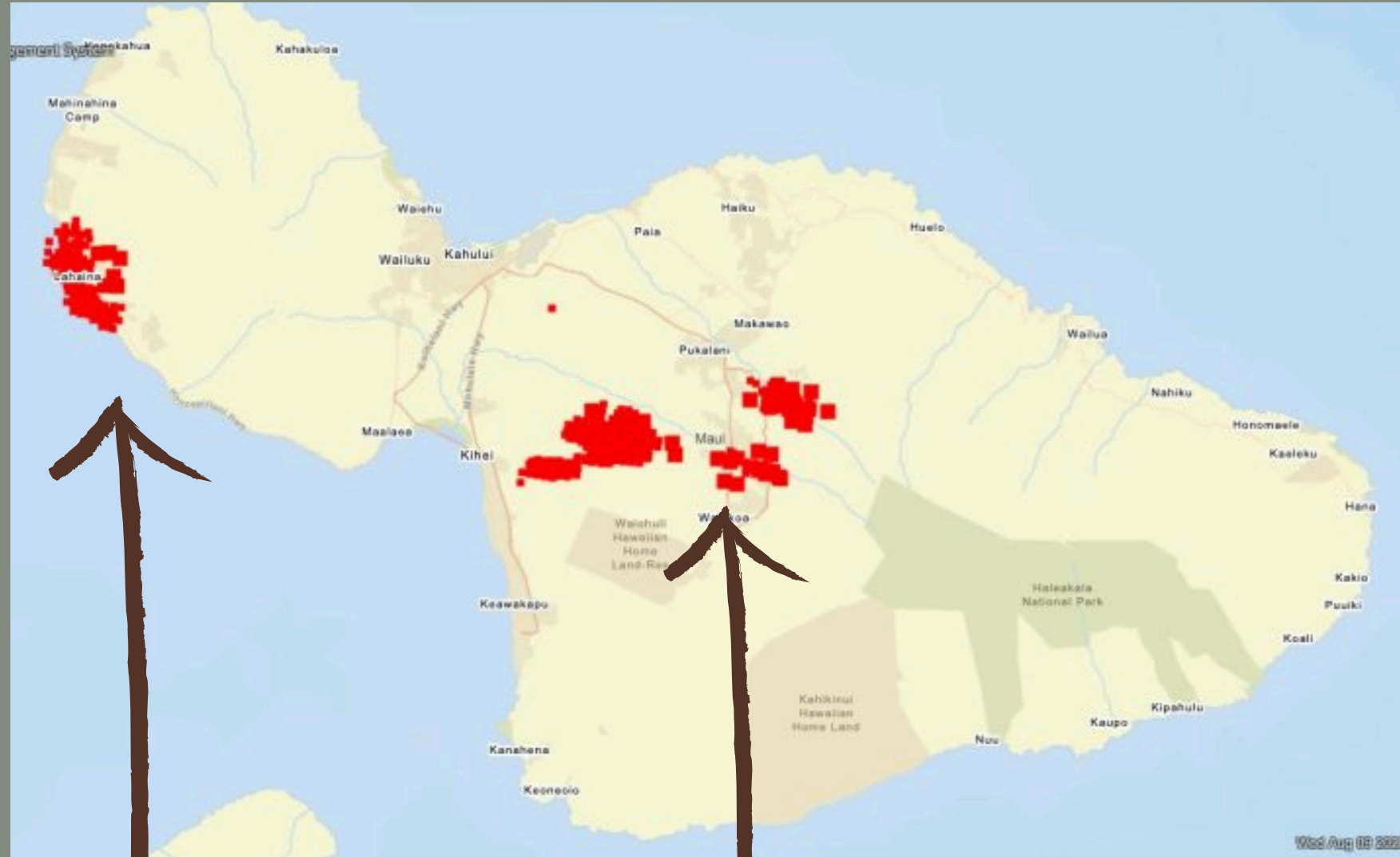
*with Sara Tekula, Founding Executive Director,
Kula Community Watershed Alliance*



KULA

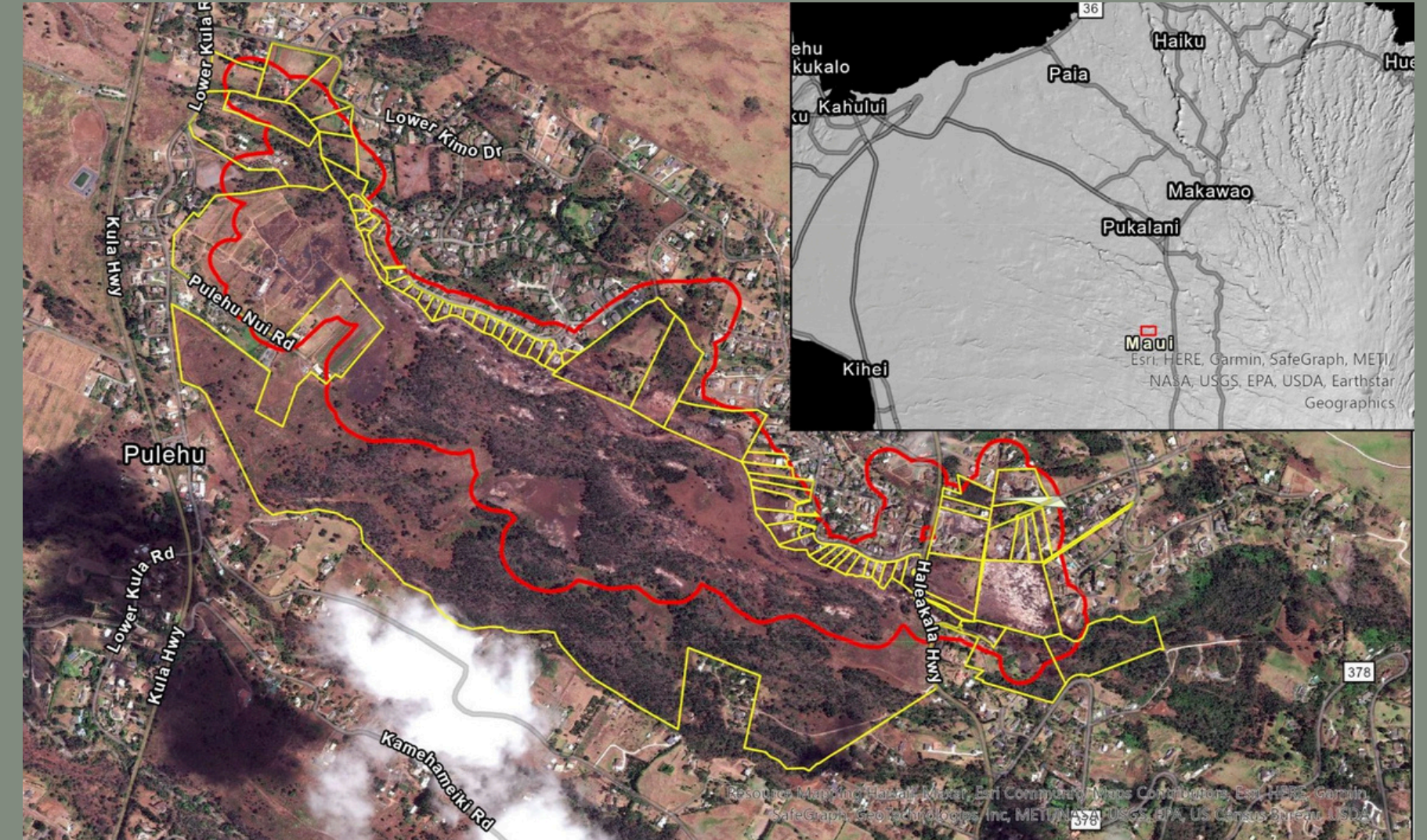


THE MAUI FIRES



**Lahaina
Fire**

Kula Fire



**202 acres burned across
71 private properties**

THE CHALLENGES OF ISLAND RECOVERY



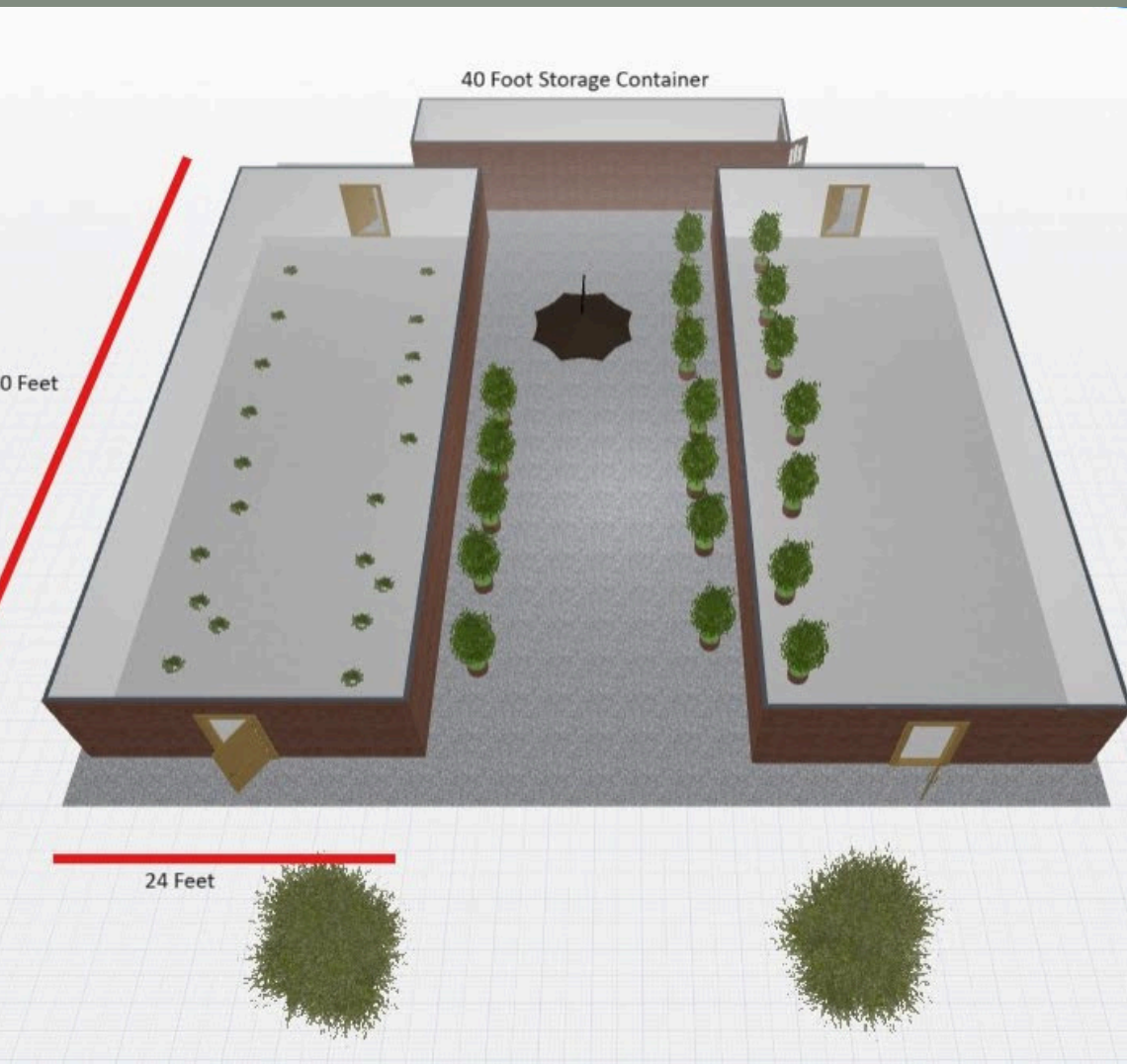
KULA'S APPROACH: HYPER-LOCAL RECOVERY



THE POWER OF COMMUNITY AND MUTUAL AID



KEY PROJECTS: RESTORATION NURSERY & TEACHING GARDEN



LESSONS LEARNED

- 1. Start with what you have.**
- 2. Engage the community.**
- 3. Honor the past while looking to the future.**
- 4. Stay flexible**
- 5. Be patient.**

**OUR COMMUNITY'S HANDS
ARE THE FOUNDATION OF RECOVERY.**

TRANSPORTABLE LESSONS FOR OTHER COMMUNITIES



THE ROAD AHEAD



“The only way to survive is by taking care of one another, by recreating our relationships with one another. Another world is necessary, another world is possible, another world is happening.”

– Grace Lee Boggs on community care

MAHALO NUI FOR YOUR TIME AND SUPPORT.



@kulacommunitywatershed



kulacommunitywatershed.org



Questions & Comments

In your opinion, what one resource was in place pre-fire that led to the greatest post-fire recovery impacts? i.e. Was there something that helped hit the ground running most in recovery?

How can those of us on the webinar help Kula's recovery efforts?

Incredible presentation! Thank you! So much to learn from the use of trees/plantings. Can you pls speak to private landowner concerns re building back?

Were there any serious soils impacts from the fire (chemical changes from heat, etc.) or were the impacts mostly due to the loss of vegetation?

Happy to be a phone-a-friend!

Thanks!

Beautiful presentation. Listening to the community is so important. Thank you for sharing.

Thank you so much Sara for sharing more about Kula! Much appreciated :)

Questions & Comments

A beautiful presentation. And the invasive is such a big issue. They are disturbance based and promote more disturbance. And can be so impactful to the local ecology which is so important to the I

Hi! Great continued work! Hopefully I can come back and see it soon!

The black wattle burn very hot in many areas in Kula, creating a granular soil structure and high water repellency leading to increased runoff.

Thank You

A recording of this webinar will be available at [AfterTheFlames.com](https://www.AfterTheFlames.com). You will also receive a follow-up email of the recording with links to any resources shared.