



# Tale of Two Fires: Progress Towards Action in Sevier County, Tennessee

# David Puckett

Sevier County Fire  
Administrator  
Fire Chief



# Brook Smith

Area Forester  
Public Information  
Officer



# Allana Funderburk

Forest Action Plan  
Coordinator



# OVERVIEW OF SEVIER COUNTY...





Chimney  
Tops 2 Fire



Indigo  
Lane Fire

Created by: Josh Russell

# East Tennessee Forest Types

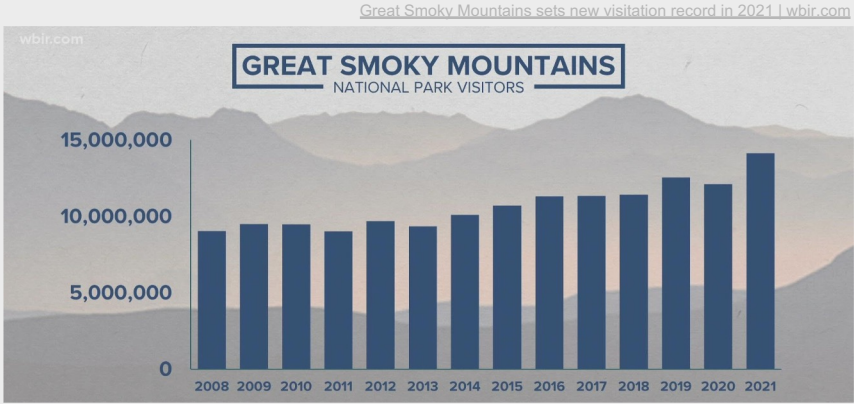
- Spruce-fir forest
- Northern hardwood forest
- Cove hardwood forest
- Hemlock forest
- Oak-hickory forest
- Pine-oak forest
- Montane alluvial forest
- Successional forest

An eastern temperate deciduous rainforest is found in the highest peaks of the Great Smoky Mountain National Park.

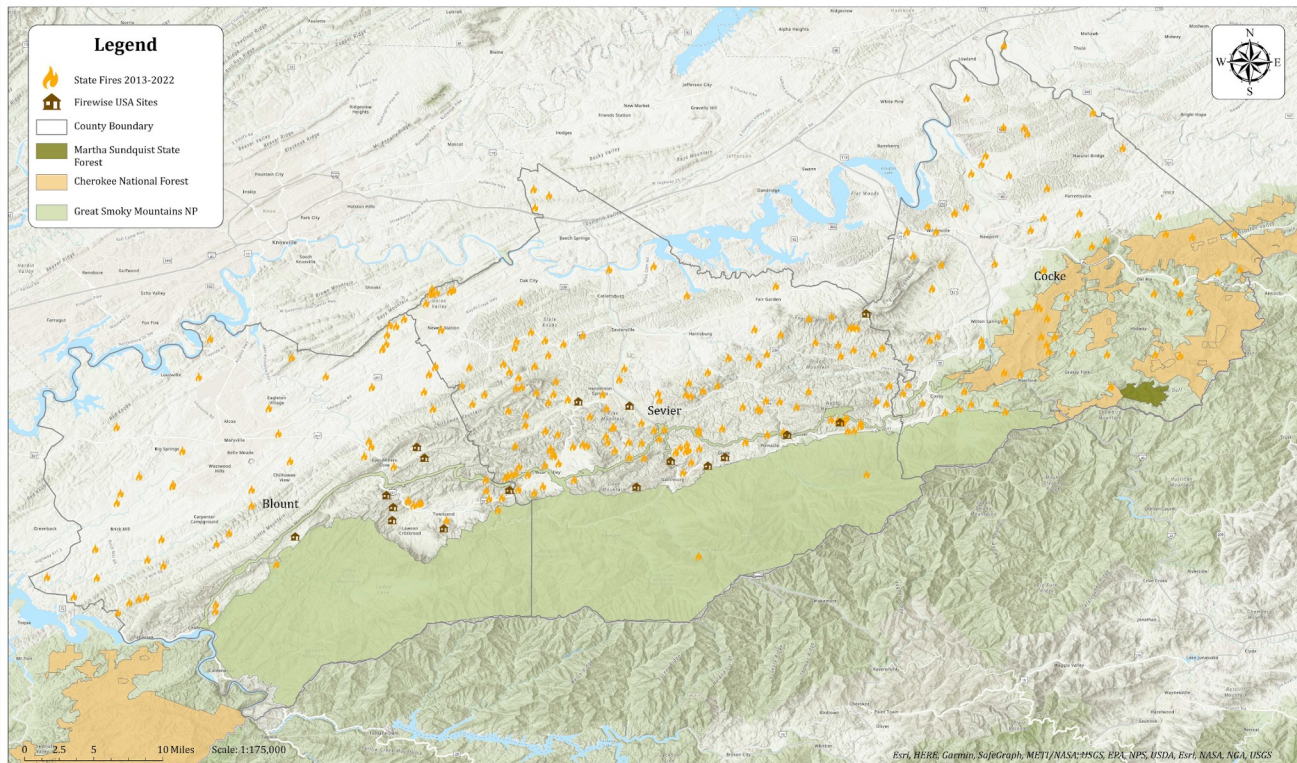


[Vegetation Types - Great Smoky Mountains National Park \(U.S. National Park Service\) \(nps.gov\)](#)

# East Tennessee Wildland Urban Interface (WUI)



# Wildfire Occurrence and Firewise USA® Sites near Federal Partners



## Wildfire occurrence and Firewise USA sites near Great Smoky Mountains National Park

280 fires reported by Tennessee Division of Forestry in Blount, Sevier and Cocke County from 2013 through 2022.  
17 active Firewise USA Sites in Blount and Sevier county.

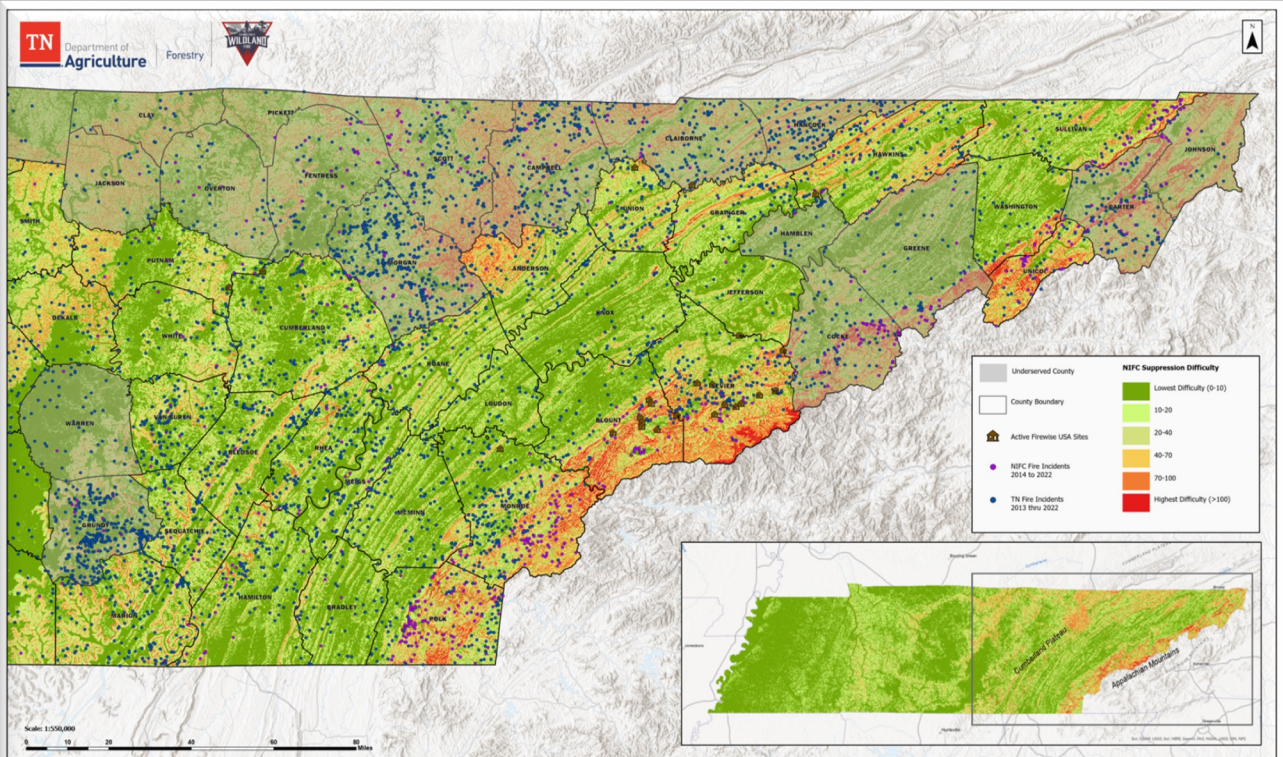
# East Tennessee Wildfire

- Official Season: October 15 – May 15
- Most fires occur in November and February – April
- Historically, our worst fire seasons occur in the spring.
- Drought extends leaf fall period
- Primarily deciduous forest
  - Leaf litter ground fires are common





# East Tennessee Suppression Difficulty



## Fire Occurrence and Wildfire Suppression Difficulty with Active Firewise USA Sites

The Cumberland Plateau and the Appalachian Mountains of Tennessee contain highest occurrence of fire and highest difficulty for wildfire suppression.  
 Underserved Counties in the Cumberland and East Districts of Tennessee: 18  
 Currently Active Firewise USA Sites in Tennessee: 24

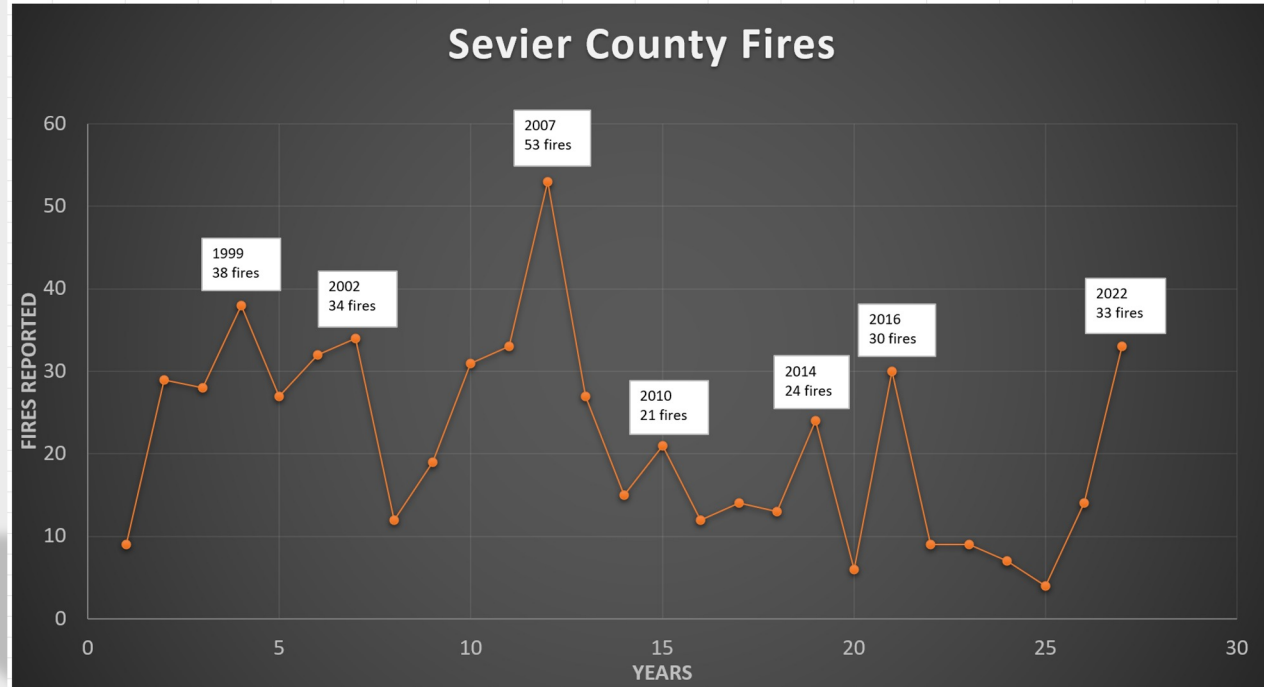
Esrri, NASA, NGA, USGS, Esri, HERE, Garmin, SafeGraph, FAO, MET/NASA, USGS, EPA, NPS  
 Tennessee Department of Agriculture Division of Forestry (TDF), 2022.

# Recent Sevier County Fire History

Since 1996...

- Over 32,700 acres burned.
- A total of 2,693 structures lost.
- More than 1,400 threatened structures were saved.
- Wildland firefighters responded to 583 wildfire calls.

*\*Based on state data, does not account for local wildfire/structure responses.*



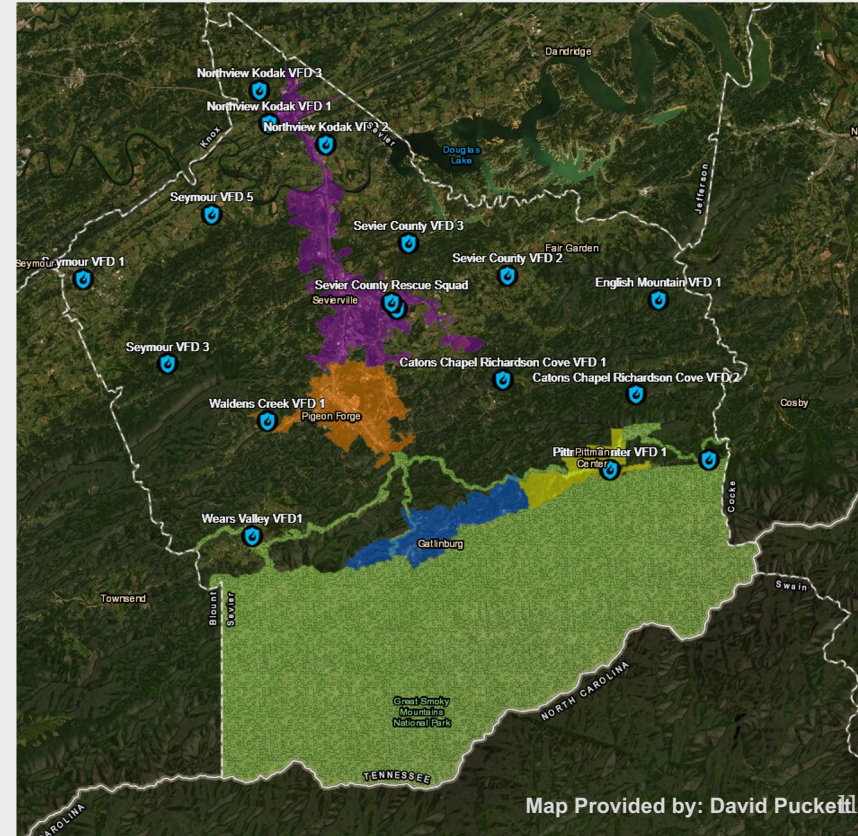
# Sevier County Fire Suppression

## Wildland- TN

- Caterpillar D4 Bulldozer with Transport
- John Deere 650k Bulldozer with Transport
- 2 Type 6 Engines
- 1 ATV
- 4 Full-time positions

## Structure- Sevier County

- 17 Stations
- 243 Firefighters
  - Majority being volunteers
- Each station has engines, tankers, and brush rigs
- Running an average of 6,500 calls annually
- 250 confirmed structure fires per year
- Same # of brush fires



# Timeline of Recent Events, Mitigation Actions, and Community Engagements



[Top 10 Favorite Things to Do With Kids in the Smoky Mountains for the 2015 Season \(hearthsidecabinrentals.com\)](https://www.hearthsidecabinrentals.com)

# 2003 Bluff Mountain Firewise USA®



**FIREWISE USA®**  
Residents reducing wildfire risks



Photo Credited to: Nathan Waters



Photo Credited to: Nathan Waters



Photo Credited to: Nathan Waters

<https://www.nfpa.org/Education-and-Research/Wildfire/Firewise-USA>

# 2007 Cove Mountain Fire

- First wake up call of the growing WUI risk in Sevier County.
- Firefighters evacuated from the mountain instead of suppressing the fire due to safety concerns.



# Sevier County Reports

## PREFERRED DIRECTIONS REPORT

SEVIER COUNTY AND MUNICIPALITIES HILLSIDES AND  
RIDGES STUDY

Sevier County, Tennessee



## SEVIER COUNTY, TENNESSEE



Growth Readiness Report  
2009

# 2009 Lower Bluff Mountain Fire

- Lower Bluff Mountain fire was located below the Upper Bluff Mountain Firewise USA® Community.
- Much of this area is short term rental cabins.
- Bluff Mountain has a large component of pine trees which is a more fire-adapted species.
- Upper Bluff Mountain is the location for essential towers for county radio communications.





# 2009 Wears Cove Gap Prescribed Fire



- Prescribed fire for wildlife habitat, ecosystem services, and fuel loading reduction.
- Areas regularly burned include: Cades Cove, Lynn Hollow, and Wears Cove Gap.
- Actions taken have been adjacent to several communities including Wears Valley and Top of the World. Top of the World is a Firewise USA® site.



# Continuing Programing...

- Most efforts went into working directly with the communities including Cobbly Nob, Upper Bluff Mountain, and English Mountain.
- 2013 Black Bear Cub Way fire
  - Structure-to-structure ignition caused by a hot tub short-circuiting.
  - A wildfire spotted from this structure fire.



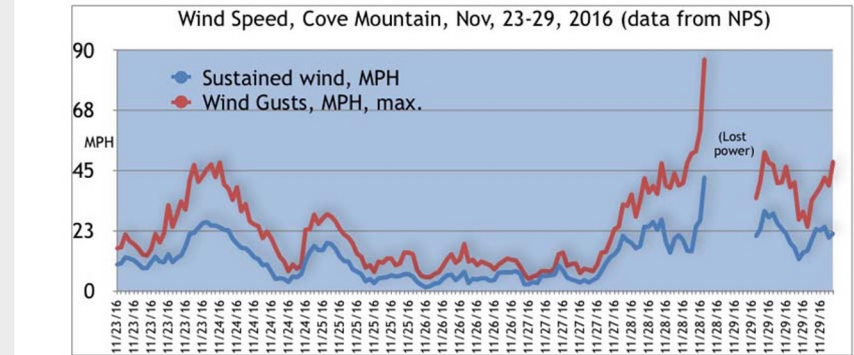
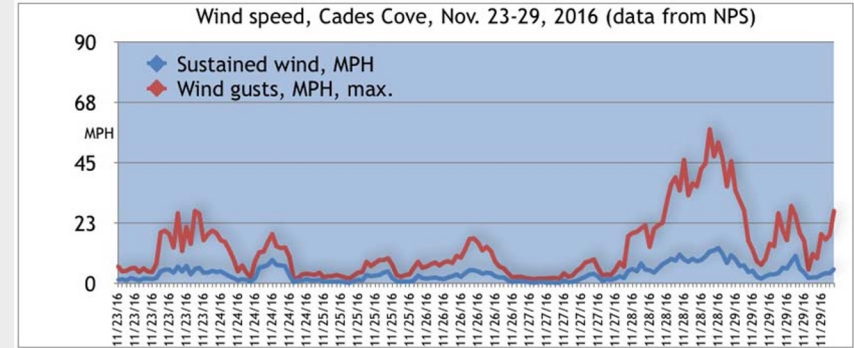
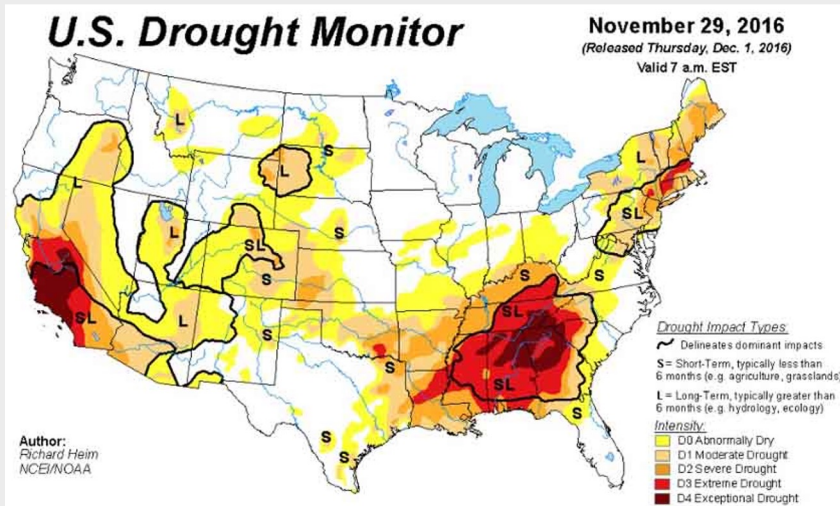
# Chimney Tops 2 Fuels

- Hardwood stands
- Pine stands
- Shrub-layer dominated by mountain laurel and rhododendron both of which have a waxy cuticle.
- Urban fuel component



# Chimney Tops 2 Climate Conditions

- Extreme Drought
- RH ~17%
- Wind Gusts up to 87 MPH
- KBDI Index: 599



[Analysis of wind, vegetation, and air tankers before the fire burned into Gatlinburg - Wildfire Today](#)

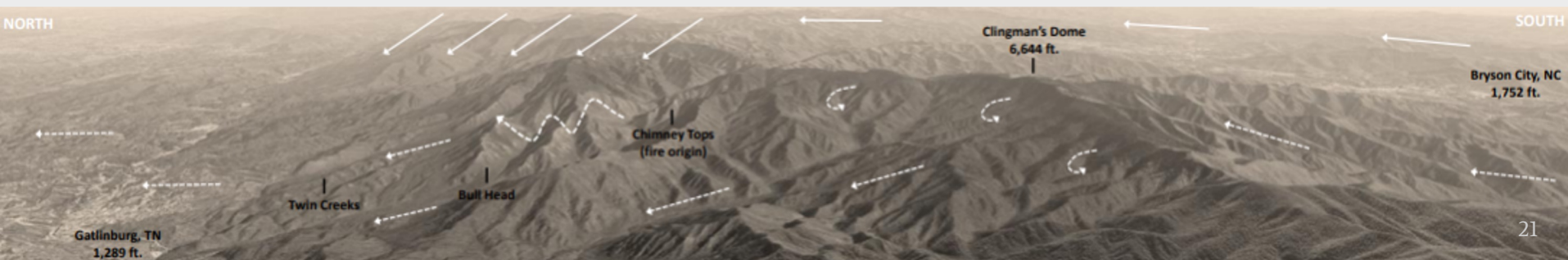
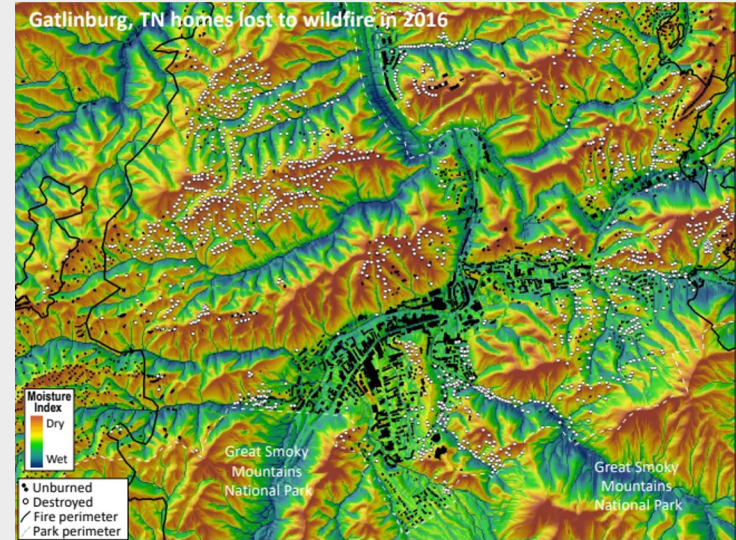
# Mountain Wave Wind Event

Steve Norman, William Christie, William Hargrove  
US Forest Service Southern Research Station



<https://forestthreats.org/products/posters/mountain-wave-induced-extreme-wildfire-behavior-the-deadly-eastern-tennessee-fires-of-2016/preview>

- A topo-atmospheric phenomenon.
- Mountain waves form when stable air passes over a range causing local turbulence and gravitational effects on the leeward slope.
- Occurs roughly 5-7 times per normal year.



# Chimney Tops 2 Fire

[Gatlinburg Fire 2016: How It Started, The Resolution, and the Later Impact \(pigeonforge.com\)](#)

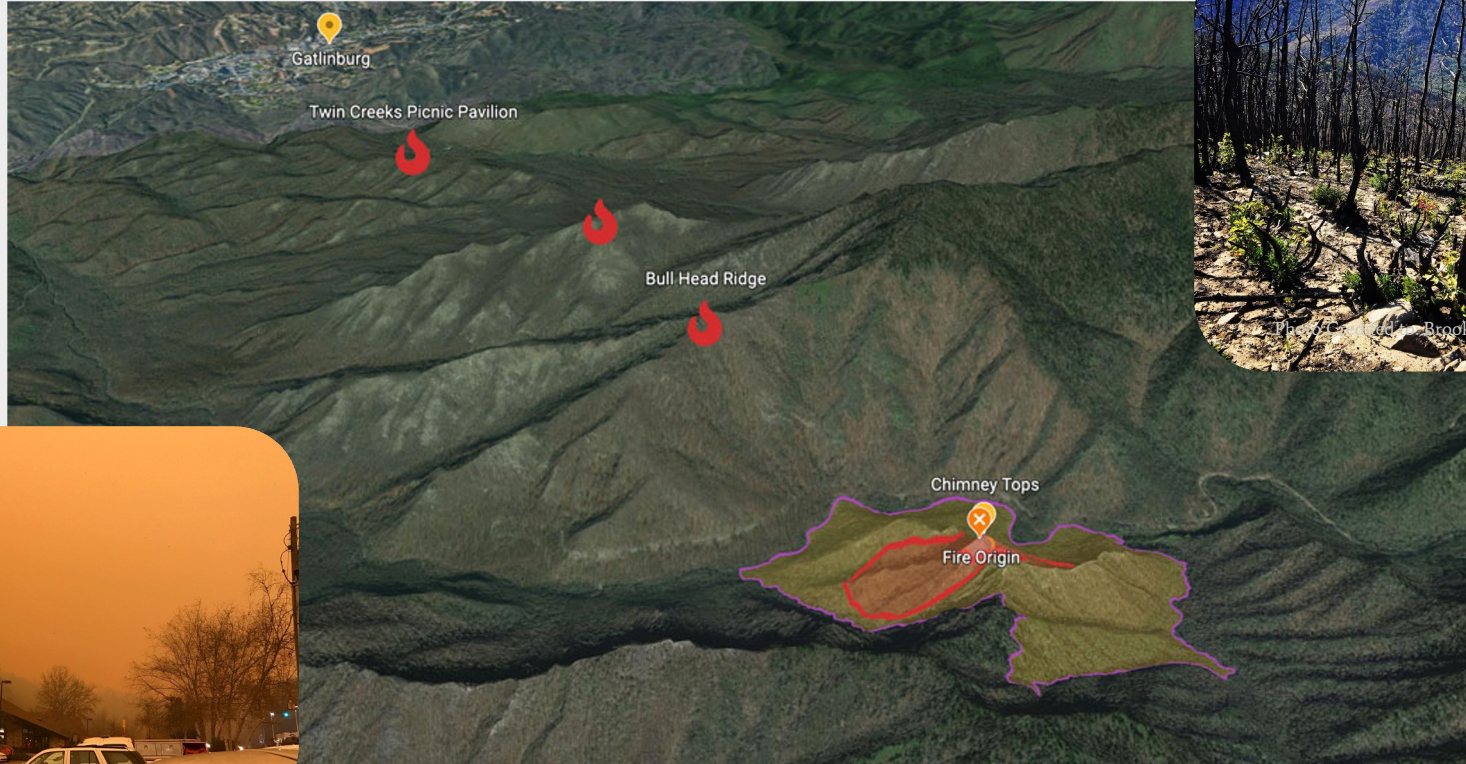


Photo Credit: Brook Smith



Photo Credited to: David Puckett

The strong gusts of wind picked up embers from the Chimney Tops 2 fire and wildfires began to appear on the western ridges of LeConte, toward the Twin Creeks picnic area, and eventually into Gatlinburg.

# Chimney Tops 2 Fire Impacts

- November 28, 2016
- Burned Area: 17,900 acres
- Structures Destroyed: 2,460
- ~\$2 Billion in Damages
- 200 People Injured
- 14 Souls Lost



Photo Credited to: Nathan Waters



Photo Credited to: Nathan Waters

# Chimney Tops 2 Fire – Fuel Loading Post-Fire





# Chimney Tops 2 Fire Impacts – Fuel Loading Post-Fire

- 100% canopy removal in areas.
- Large amount of standing snags and heavy fuel-loading laying on the ground in the WUI.
- Flashy fuels already building up in the understory amidst the down woody debris.



# Chimney Tops 2 Fire Impacts – Snags and Down Woody Debris

- Snags are a huge risk within the WUI because they are above ground-level which can cause embers to be carried by winds.
- Home owners need to be ember-aware since there are abundant snags in the area.
- Utilities dropped countless snags that threatened ROWs but blocked them up and left them in ditches or along the road side.



# Chimney Tops 2 Fire Impacts— Regrowth



Photo Credited to: Nathan Waters



Photo Credited to: Nathan Waters



Photo Credited to: Nathan Waters



Photo Credited to: Brook Smith

# Chimney Tops 2 Fire Impacts– Exotic Invasive Plant Species

- Exotic invasives: kudzu, royal paulownia, tree-of-heaven, mimosa, miscanthus grass, privet, and others.
- Exotic invasive plants are found readily around East TN due to favorable growing conditions
- 100% canopy destruction around urban infrastructure provides new growing space





Photo Credited to: Brook Smith



Photo Credited to: Nathan Waters



Photo Credited to: Nathan Waters



Photo Credited to: Brook Smith



Photo Credited to: Nathan Waters



Photo Credited to: Nathan Waters

# Chimney Tops 2 Fire Impacts – Social

- Aversion to Rx Burning
- Considerate Communications/ Messaging
- Increased resources devoted to mitigation and post-fire recovery.
- Risk Acknowledgement
- Community Engagement



Photo Credited to: Cherise Guestford



Photos Credited to: Rick Brown



Photo Credit to: Brooke Smith

# Since 2017...

- **In Tennessee:**
  - Active Firewise USA sites: 24
  - Over 64,000 cubic yards of flammable vegetation removed
  - Over 170,600 hours invested into Firewise USA best practices
  - Total investment of \$5.4 million
- **In Sevier County**
  - 10 Active Firewise USA Sites
  - 12 CWPP's Prepared and Approved



**Sevier County**  
Fire Adapted Communities



**Community  
Engagement**

**Building  
Capacity**

**Growing  
Partnerships**



# 2017 Chalet Village Firewise USA® Recognition Celebration



Photo Credited to: Nathan Waters



Photo Credited to: Nathan Waters



Photo Credited to: Nathan Waters

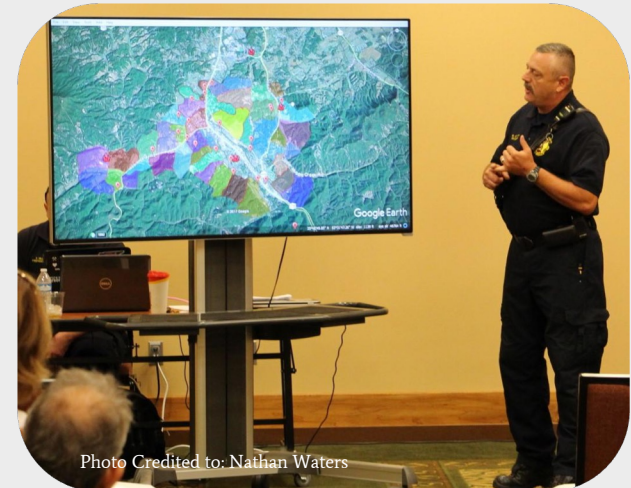


Photo Credited to: Nathan Waters



# 2017 Pigeon Forge Firewise USA® Meeting

- Pigeon Forge was a pilot site for the Ready, Set, Go program and has always been progressive with fire management.
- Pigeon Forge has many values at risk in their jurisdiction including Dollywood Theme Park.



# Smoky Mountain Roots

Dec 19, 2017



<https://www.smokymountainroots.org/>



Video Credited to: Brook Smith

# Smoky Mountain Roots – First Planting

Sat.  
Feb 24, 2018 1st Planting  
250 K Tree Day  
7 Volunteers + myself for assisted plantings  
6 Assisted plantings.



# Smoky Mountain Roots – Growing

2018 The trees just kept coming.

MARCH 10, 2018 1001 Trees out

MARCH 30, 2018 1531 Trees out

APR. 2nd on my way to get more trees.



# 2018 Gatlinburg FireWise USA® Day



Photo Credited to: Nathan Waters



Photo Credited to: Nathan Waters



Photo Credited to: Nathan Waters

# 2018 Ski Mountain Fuel Reduction Project



Photos Credited to: Matt Wood

# Smoky Mountain Roots – Earth Day Outreach

April 26, 2018 Pi Beta Phi Bookmarks for Kids w/ Free tree!



# 2018 Pigeon Forge CPAW



- Pigeon Forge hosted the Community Planning Assistance for Wildfire (CPAW) into the area post Chimney Tops 2.
- Field Tour to survey the community and the landscape.
- Develop a report with recommendations.
- Facilitate a training focused towards planners within the local jurisdictions of several East Tennessee Counties.



<https://cpaw.headwaterseconomics.org/what-we-do/>





# 2018 CPAW Facilitated Training



- **WUI Context**
  - Ingress and Egress
  - Density and Size of Structures
  - Building Construction Methods and Materials
  - Dense Vegetation in Proximity to Structures
  - Presence of Other Ignition
- **Stakeholder Training**
  - WUI Fire Behavior
  - Wildfire Hazard and Risk Assessment
  - Wildfire Risk Relationship to Planning
  - Land Use Planning Tools
- **Recommendations on Future Planning**



Photo Credited to: Nathan Waters



Photo Credited to: Nathan Waters

# Smoky Mountain Roots – Noticed a Problem

1-21-19  
The Kudzu is coming!  
The Kudzu is coming!



# Smoky Mountain Roots – Youth Outreach

Girl Scout troop #20444 out  
of Knoxville. Achieving the "Silver Award"





# July 14, 2019 Creation of David's Position – Fire Administrator

- Fire service is a non-essential service in TN.
  - EMS and Law Enforcement are essential services.
- Coordination of efforts between the 9 volunteer agencies and 3 municipal agencies that provide services to the county.
- Ensure crew cohesion and responder readiness.
- Strategic planning for the future.
- Misson: Excellence is achieved through cooperation, education, preparation, and mitigation.



Photo Credited to: Brook Smith

 VISIT My SMOKIES  
**Safety and Emergency Preparedness Tips**

**This Address is:** \_\_\_\_\_

- No unpermitted open burning.
- Grill only in designated areas and NEVER leave hot or smoldering ash. Dispose of ash in appropriate metal container, if provided.
- Follow all emergency instructions and/or exit the building when a fire alarm is active.
- Become familiar with Exits and/or Navigation Signs for routes to exit residential communities in case of an emergency.
- Fireworks are not permitted.

**For False Alarms and/or Non-Emergency Issues call local rental agency at:** \_\_\_\_\_

	Scan QR Code to Download the CodeRED Mobile Alert App!		Scan QR Code to Stream 1680 AM Emergency Advisory Radio Station	
--	--	--	---	--



Photo Credited to: David Puckett

# Smoky Mountain Roots – Outreach Partnership

Aug 9, 2019 Smokey Bear's 75th Birthday Party  
by the promise of SEED! ♡



# Kudzu Crisis in Burned Area



*Sevier County pushes to battle kudzu infesting areas hit by wildfires*

# 2020 Kudzu Town Hall



Video Credited to: David Tiereny



# Smoky Mountain Roots – Expanding Focus

3/13/20 Roundstone wildflower/grass mix 40 lbs



# March 16, 2021 Utility Training – Local Partners



Video Credited to: Brook Smith



Photo Credited to: Brook Smith



Photo Credited to: Brook Smith

# 2021 Successful Mitigation – Message Received

- Outreach beforehand caused mitigation by a homeowner.
- Information Officer worked with the media to communicate this success.



# Smoky Mountain Roots – Continuing the Mission

3/20/21 3/20/21

To Dept of Ag Division

- Buttonbush } quick growth, bushy
- Indigobush } wildlife, cover
- Red mulberry
- N Red Oak - good timber tree
- Native Sweet Pecan
- Smooth Sumac - ~~medium~~ Shiny flower Red leaves  
- Shiny only live 25 yrs. or so
- Persimmon



Photos Credited to: Cherise Guesford

# 2021 Wears Gap Cove Prescribed Fire



# UT Extension Field Trip

- Site visit to RoundStone Native Seed included a presentation and facilities/field tour.
- Partners included:
  - UT Extension
  - Master Gardeners
  - Smoky Mountain Roots
  - Firewise USA® Site community members
  - TN Division of Forestry.



Photo Credited to: Brook Smith



Photo Credited to: Cherise Guesford



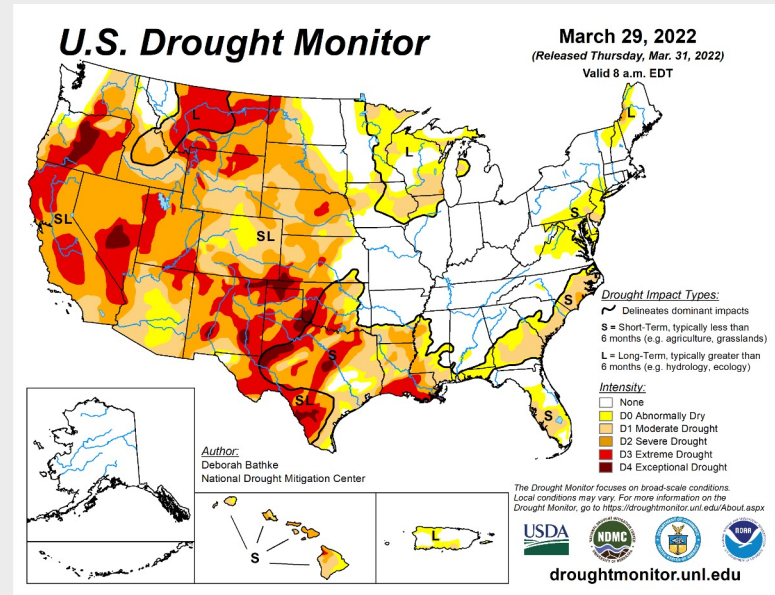
Photo Credited to: Brook Smith



Photo Credited to: Cherise Guesford

# Indigo Lane Environmental Conditions

- Normal drought index
- Expected Max Wind Gusts: 80 – 90 MPH
- Red Flag Warning:
  - Strong Winds
  - Low RH
- Crews were on heightened alert due to weather conditions



## .DISCUSSION...

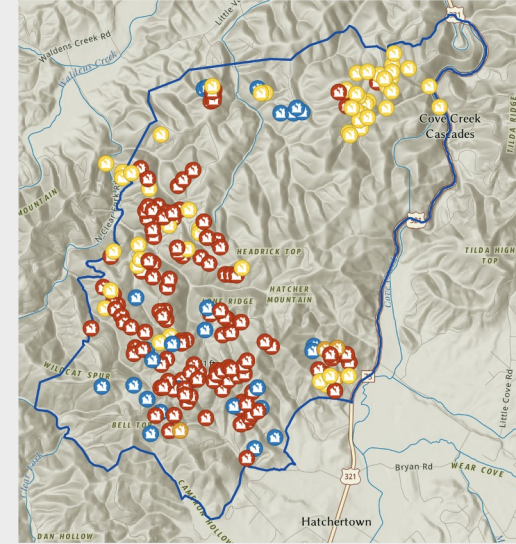
Critical fire weather conditions are expected into tonight as low fuel moisture, low humidity, and very strong winds overlap.

# Indigo Lane Fire Impacts



- March 30, 2022
- Burned Area: 2,498 acres
- Structures Destroyed: 213
- Structural Fire Fighting Equipment Lost: 5
- ~\$65 Million in Damages
- ~\$3 Million in Suppression Costs
- Grand Divisions IMT assisted with suppression

	Destroyed
	Minor
	Affected





# Indigo Lane Fire – Fuels Post-Fire

- Mixed fire effects depending on aspect.
- Rebuilding began almost immediately.
  - New construction seems to reflect resilient building practices.



# Indigo Lane Fire Impacts – Social

- Recognition that disastrous wildfires can occur outside of drought conditions.
- Request for a Community Mitigation Assistance Team (CMAT).
- Renewed vigor between the community leaders and the community in regards to action on pre-planning and mitigation.
- Better communications between partnering agencies.



# 2022 CMAT Meeting



- CMAT is a team of mitigation professionals from different parts of the country that brings a fresh eyes with new perspective.
- CMAT provides the county with a field survey, a series of interviews to inform a SWOT exercise, a workshop with local resources to brainstorm ideas for the area, and a report.
- This dialogue between Sevier County and these mitigation professionals continues to this day.

<https://www.fs.usda.gov/managing-land/fire/cmat>

## Sevier County, Tennessee

*Actions Speak Louder Than Words*



Prepared by the Community Mitigation Assistance Team  
May 18, 2022



Photo Credited to: Nathan Waters

# 2022 Wildfire Community Preparedness Expo



## Wildfire Community Preparedness Expo May 7, 2022

Sevier County Fairgrounds  
754 Old Knoxville Hwy | Sevierville, TN  
10 am - 3 pm

FOOD TRUCKS  
GIVEAWAYS  
DOOR PRIZES  
SMOKEY BEAR  
BULLDOZERS  
FIRETRUCKS  
KID ACTIVITIES  
SIM TABLE  
DEMONSTRATIONS  
FIRE SAFETY HOUSE



**LEARN. PLAN. PREPARE.**  
COME AND LEARN WHAT YOU CAN  
DO TO BE PREPARED FOR WILDFIRE!

Made possible by



# April 2023 Forestry Commission Meeting – Nashville

- Advancement of fire services to protect and educate the citizens of Sevier County.
- Update of code improvements made since the 2016 fires.
- Promoting Firewise USA® construction; working with insurance companies to provide discounts.
- Ensuring new developments are more fire ready than in the past.
- Working with Sevier County to implement hazard mitigation strategies at county and community levels.



Photo Credited to: Michaele Bloodsworth

# 2023 Wildfire Preparedness Expo



Photo Credited to: Brook Smith



Photo Credited to: Brook Smith



Photo Credited to: Brook Smith

**PREPARE. PROTECT. PRESERVE.**

**2023 WILDFIRE Preparedness Expo**

**June 3, 2023**  
10:00am - 3:00pm  
Sevier County Fairgrounds  
750 Old Knoxville Hwy | Sevierville, TN

**NEW! AERIAL EXHIBIT**

**>>> Free to attend! <<<**

Join us for a day of hands-on learning all about how to prepare for wildfires! Visit the exhibit booths and talk with experts about wildfire response and restoration. Bring the kids along for fun games and activities! Wildfire responders will have tools, trucks and equipment on display including an aerial firefighting exhibit. Don't be late, door prizes are limited!

**HUNGRY ALREADY? FOOD TRUCKS WILL BE ON SITE!**

Brought to you by these partners:

**Interactive Demonstrations**  
Demonstrations will take place throughout the day to teach residents how to safely make wildfire risk around their home and what to do before, during and after wildfires.

**Kids Activities & Games**  
Many exciting games and activities for kids with prizes available for several limited time events. Kids will have some fun games for kids. Snacks there will be ready to go!

**Wildfire Partner Exhibits**  
Meet the pros! Meet local experts on how to prepare for wildfires. Learn how to take part in fire preparedness and restoration or other wildfire-related activities. Take a closer look at the tools and equipment used to fight wildfires.

For more info Contact us: 827 Court Ave., Sevierville, TN 37862 | 423.639.2222 | www.seviercountytg.com | Office: (423) 774-5662



Photo Credited to: Brook Smith



Photo Credited to: Brook Smith

# 2023 Great Smoky Mountains National Park Safety-Mitigation Day

- TDF and Gatlinburg FD working with federal partners.
- 19 Volunteers
- Leaves were mitigated away from the historic structures in Elkmont.



# December 14, 2023 Short-Term Rental Program

- Two programs across a week to communicate the need for this new inspection program.
- Over 6500 short-term rentals were identified in the first year.
- The community was cautious but receptive.





# 2023 Welcoming the New Sevier County Fire Unit – Local Partners

- TDF meets the new Sevier County Fire and EMS unit.
- Introductions, process, capacity, operations, and mitigation were discussed.



# 2024 Wildfire Mitigation BMP Course – Expanding Capacity



- 2-day course conducted by Coalitions & Collaboratives.
- 36 students from 6 counties.

<https://co-co.org/programs/community-wildfire-mitigation-best-practices-training/>



Photo Credited to: Brook Smith



Photo Credited to: Brook Smith



Photo Credited to: Brook Smith

# 2024 Wildfire for Law Enforcement Training – Collaborations

- IAFC and subject matter experts from Estes Park, CO.
- 17 attending
- LEOs from city, county, state, and NPS. Structural and wildland fire as well.

<https://www.iafc.org/blogs/blog/iafc/2021/09/29/rsg-for-law-enforcement>



Photo Credited to: Brook Smith



Photo Credited to: Brook Smith

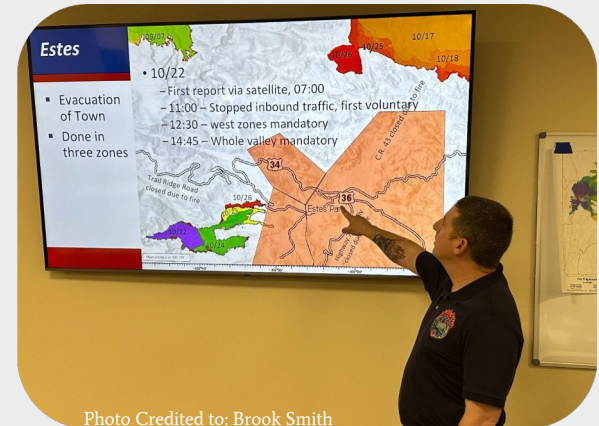


Photo Credited to: Brook Smith

# Changing the Culture

[https://www.tn.gov/content/dam/tn/tnwildlandfire/documents/prevention/fac/TN\\_FAC\\_Communities\\_Guide.pdf](https://www.tn.gov/content/dam/tn/tnwildlandfire/documents/prevention/fac/TN_FAC_Communities_Guide.pdf)



## Tennessee Fire Adapted Communities Guide

A WILDLAND FIRE SAFETY GUIDE FOR TENNESSEE RESIDENTS



**Information for residents of Tennessee to protect their homes and communities from the effects of wildfire.**

Wildfire threat reduction recommendations are presented for three areas around your home.

### Access

This zone provides suggestions that help emergency responders locate your home in a timely manner.

### Defensible Space

This zone pertains to the vegetation surrounding your home, both landscape plants and native plants.



Contact your local fire department or Tennessee Division of Forestry for free wildfire safety guidelines. Information can also be obtained from [www.BurnSafeTN.org](http://www.BurnSafeTN.org) and [www.fireadapted.org](http://www.fireadapted.org)

This zone includes recommendations for home construction.

# Raising Community Engagement

- Quarterly FAC Meetings
- Community Equipment Hub
- Annual Wildfire Preparedness Expo
- Developing Vendor Services Program
- Collaboration with Federal Partners
- Firewise USA® Cleanup Days



Photo Credited to: Nathan Waters



Photo Credited to: Nathan Waters



Photo Credited to: Cherise Guesford

# TNC's Don't Move Firewood Campaign

- 2008 – Present
- Prevent introduction of invasive insects on Firewood.
- 2015- only heat-treated firewood that is bundled with a certification stamp by the USDA or TN Department of Agriculture is allowed for use in the campgrounds of GSMNP.
  - Campers may also collect dead and down wood within the park for campfires.



**MOVING FIREWOOD**  
TRANSPORTS TREE-KILLING  
**INSECTS AND DISEASES**



Tree-killing pests hitchhike on firewood - spreading insects and diseases that destroy our trees and forests.

Protect your favorite places from this threat:

- Buy certified heat-treated firewood.
- Tell your friends not to move firewood.
- Ask a park ranger or campground host about where to get certified heat-treated firewood or go to [FirewoodScout.org](http://FirewoodScout.org)

**DONTMOVE**  
**FIREWOOD.org**



**TN** Department of  
Agriculture | Forestry

The Nature  
Conservancy



US Army Corps  
of Engineers

# The Nature Conservancy and National Park Service Partnerships

- TNC conducts prescribed fires on approximately 100,000 acres annually on ecologically suitable area in the southern Appalachian Mountains.
- 10+ year relationship with GSMNP



Photos Credited to: The Nature Conservancy



# Fire Learning Network

- Join partners to collaborate, develop, share, and apply the best available science to restore fire across our diverse region.
- Goals:
  - Implement management based on the Landscape Conservation Forecasting process
  - Advance resource sharing to build capacity for large-scale cross-boundary treatments
  - Expand landscape-scale Ecomath analysis to additional sections of the landscape
  - Inspire engagement of additional stakeholders and new staff

<https://firenetworks.org/fln/>



Photo Credits to: Brook Smith



# Restoration Rally

- Follows Keep Sevier Beautiful's Kudzu Town Hall Format
- Speakers from local, state, and federal government and UT Extension.
- Inform the local community on restoration practices that can be implemented in an area where fire has moved across the land.

## WEARS VALLEY RESTORATION RALLY

MONDAY, MAY 6

6:00 - 8:00 PM

WEARWOOD  
ELEMENTARY CAFETERIA  
3150 WEARWOOD DRIVE

The Nature Conservancy is working alongside the TN Division of Forestry to create a Post-Wildfire Restoration Manual for the Wears Valley Community.

We have partnered with Keep Sevier Beautiful to invite you to join us for your input and questions.

- 6:00 - 6:05** Opening Remarks- Lisa Bryant, Executive Director with Keep Sevier Beautiful
- 6:05 - 6:20** Importance of Wildfire Mitigation- David Puckett, Sevier County Fire Administrator
- 6:20 - 6:35** Post-Wildfire Restoration Manual- Allana Funderburk, The Nature Conservancy
- 6:35 - 6:50** Post-Fire Silviculture- Dr. Stephen Peairs, UT Extension
- 6:50 - 7:10** Wildfire Mitigation Through Firewise Landscaping- Brook Smith, TN Division of Forestry
- 7:10 - 7:25** Native Species Selection to Encourage Pollinators- Jesse Webster, National Park Service
- 7:25 - 7:35** Questions from Attendees

We will have booths from local vendors that specialize in restoration work

FOR MORE INFORMATION, PLEASE CONTACT ALLANA FUNDERBURK AT (615) 202-1642 OR A.FUNDERBURK@TNC.ORG  
LISA BRYANT AT (865) 774-6677 OR LBRYANT@KEEPSEVIERBEAUTIFUL.ORG



The Nature  
Conservancy



UTIA  
INSTITUTE OF  
AGRICULTURE  
AND FORESTRY



TN  
Department of  
Agriculture



# Post-Wildfire Restoration Manual

- Contents will include:
  - Fire Ecology
  - Site Assessment
  - Soil
  - Vegetation Management
  - Habitat Enhancement
  - Monitoring
  - Community Engagement
  - Funding Options
- Collaborative document
- Designed to be replicated to serve other communities that may be impacted by wildfire in the future.



# What's Next?

- 80th on the 8th Smokey's Birthday and 2024 FAC Expo
- County attending SBR FLN to expand
- County applied for Community Wildfire Defense Grant (CWDG) funds for CWPP development
- Potential Partnership between Smoky Mountain Roots and a local tree service to expand capacity.
- Following the CWPP, the county plans to attain implementation funds through the CWDG
  - Shaded fuel breaks
  - Buffer treatments around communities
  - Mitigating fuel loading next to essential infrastructure (comm towers and water towers)
  - Developing further projects
- Set systems in place for a resilient and sustainable community.



# Questions?



Photo Credits to: Cherise Guesford

David Puckett  
dpuckett@seviercountyttn.gov

Brook Smith  
brook.smith@tn.gov

Allana Funderburk  
a.funderburk@tnc.org