

# Instructions



# Welcome

Esther Duke | Chief Operations Officer  
Coalitions & Collaboratives | [co-co.org](http://co-co.org)

## AIM GRANT

CCOCO offers a unique wildfire mitigation funding opportunity for a wide variety of capacity-building activities, including personnel, planning and wildfire risk reduction work on non-federal land.



## COMMUNITY WILDFIRE MITIGATION BEST PRACTICES TRAINING

The CWMBP national-level training is designed for current or future mitigation specialists, wildfire program leads and others who work with residents and their communities, to become more efficient and effective at reducing wildfire risk.



## COLDFIRE SEQUESTRATION

Coldfire is a group of mycology researchers investigating the use of native fungi to heal and improve our forests with the forest ecology itself. Fungal-produced composts have been scientifically proven to hold twice as much carbon. This could provide an opportunity in which to increase our carbon stores naturally and safely.



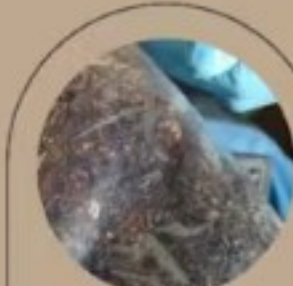
Wood chips produced from forest mitigation



Infuse with fungi for rapid decomposition



Decomposition after one season



Compost in a matter of two seasons as opposed to two decades



## AFTER THE FLAMES

A series of webinars and biannual conferences providing tools and tactics for communities and agencies impacted by wildfire.

## MITIGATION MENTORS

The Mitigation Mentors Program (MMP) provides one-on-one mentorship to increase wildfire mitigation, increase organizational capacity, improve community resilience and support wildland fire adaptation.



CO-CO.ORG



2432 S. Downing St. Suite 101  
Denver, Colorado 80210  
719-412-3747



## COMMUNITY MITIGATION ASSISTANCE TEAM

The CMAT works closely with Incident Management Teams, the U.S. Forest Service or other land management agencies, and community residents and leaders to identify mitigation opportunities before fire impacts the community.



## RIVERBANK

A revolving loan fund that provides bridge funding for project implementation for conservation collaboratives. Funding is designed to increase the efficiency and impact of existing investments.



**ATF**  
After the Flames  
brought to you by Coalitions & Collaboratives, Inc.  
*Tools and tactics for communities and agencies impacted by wildfire.*



## Save the Date

April 15-17, 2024

YMCA of the Rockies, Estes Park, Colorado



[co-co.org](http://co-co.org) | [aftertheflames.com](http://aftertheflames.com)



# Continuing Education

- Society for Range Management
- Society for Ecological Restoration
- You will receive a certificate of completion with your follow-up email
- Additional information on submitting your credits will be in your follow-up



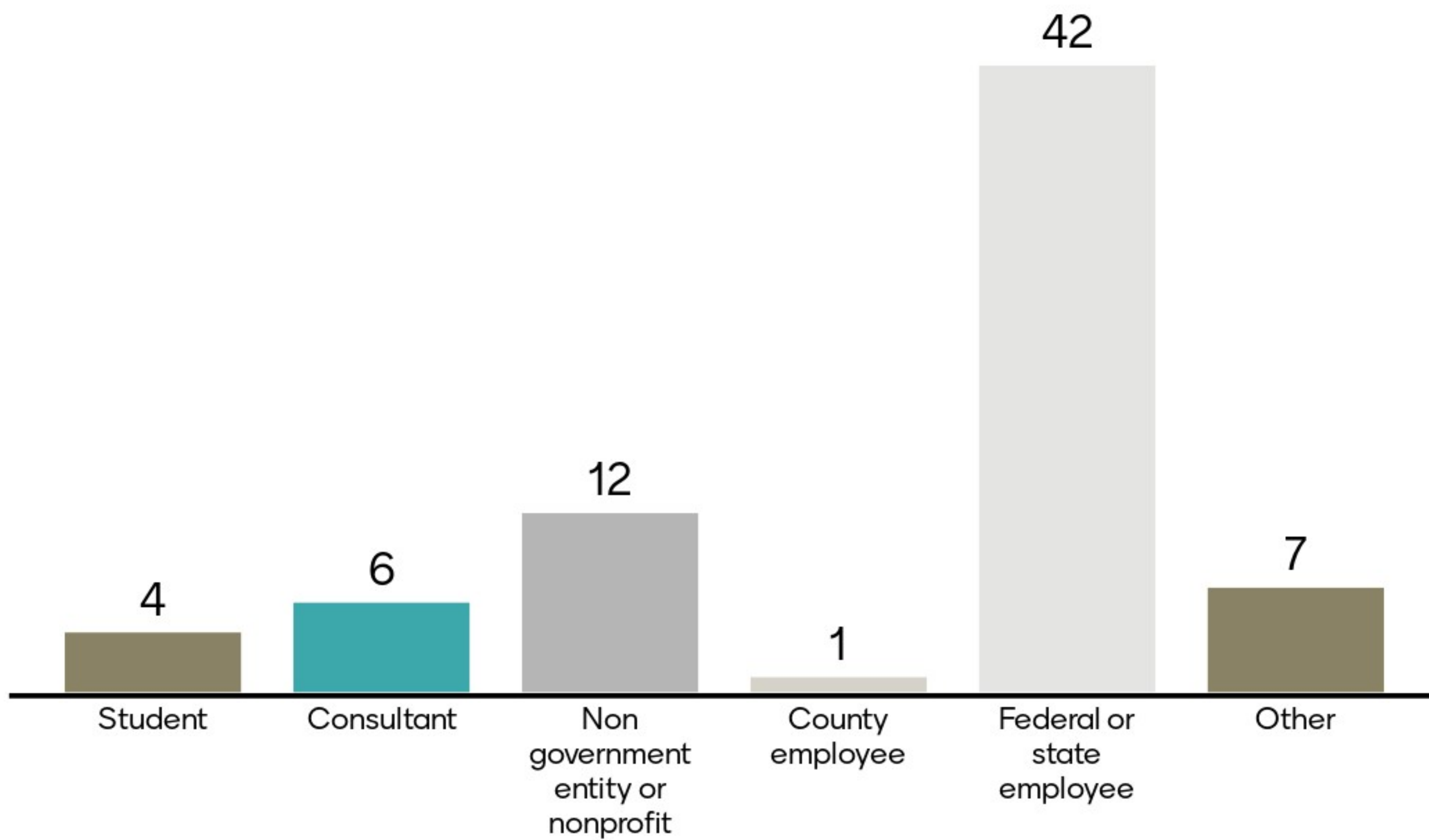
# Using Mentimeter

- Scan the QR code or enter menti.com into your computer's web browser
- Enter the code given in the QR box or info bar above
- Follow along and participate in the webinar

## Discussions, Polling, Q&A,

- Polling is anonymous. Please be respectful and professional.
- Please reserve GoToWebinar's 'Question' box for technical issues.
- Please note we will try to address all questions and comments in the webinar recording.

# I'm a







# What do you hope to get from this webinar?

50 Responses

Learn something new

Situational awareness

Learn something new

Latest research

More information regarding wildfire impacts

Pre-fire planning for post-fire

Latest research

Knowledge of effects

Technical background

## What do you hope to get from this webinar?

50 Responses

To better understand restoration after a fire

Awareness

Latest Research

updates on post fire debris flow research

first intro to topic. will learn so much!

Learn more about debris flow analysis.

Recent improvements in USGS debris flow modeling, appropriate applications / constraints of data outputs

Guidance to apply in western Oregon watersheds

what's new in wildfire research

# What do you hope to get from this webinar?

50 Responses

Learning more about helping environment after fire.

Stay current on information and new developments as a baer team lead

Land management planning

awareness of resources

Learning about postwildfire modeling.

Update on USGS's efforts to create regionally-calibrated M1 models

Research and guidance

Ways to assess and/or calculate debris flows and impacted areas.

Pre fire planning for post fire

# What do you hope to get from this webinar?

50 Responses

Tools for land mgt

Learn about debris flow data inputs

Real world examples of events and what was done

Planning to prepare watersheds for post fire impacts

Overview of fire work

Short long term effects

Looking for ways we can work to educate survivors through disaster declarations

Technical knowledge and implications for mitigation.

Information

# What do you hope to get from this webinar?

50 Responses

Networking

thank you for opportunity

Calculate debris flows

estimating post fire debris flow

Updates on post-fire modeling efforts

The aftereffects of fire and how we can work to prevent it and restore it when it does happen

Options for treatments

How this work might fit with research we fund

Insight into the forms and processes that influence post-fire hazards. How to warn

# What do you hope to get from this webinar?

50 Responses

Info

Post-Fire Water Utility planning and Source  
Water Protection

Application to Oregon

a

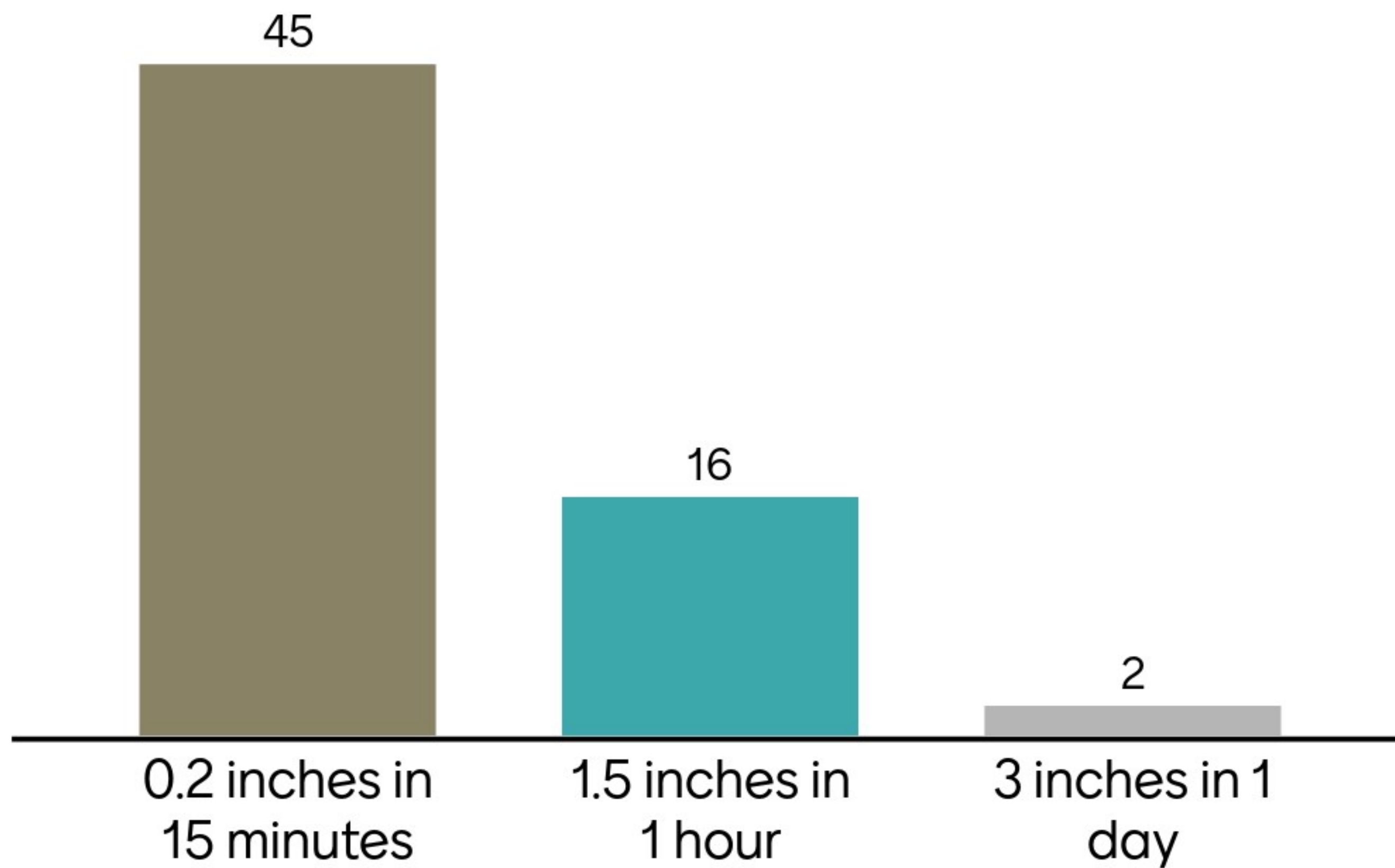
a

This slide is linked to another presentation and is only viewable from the app

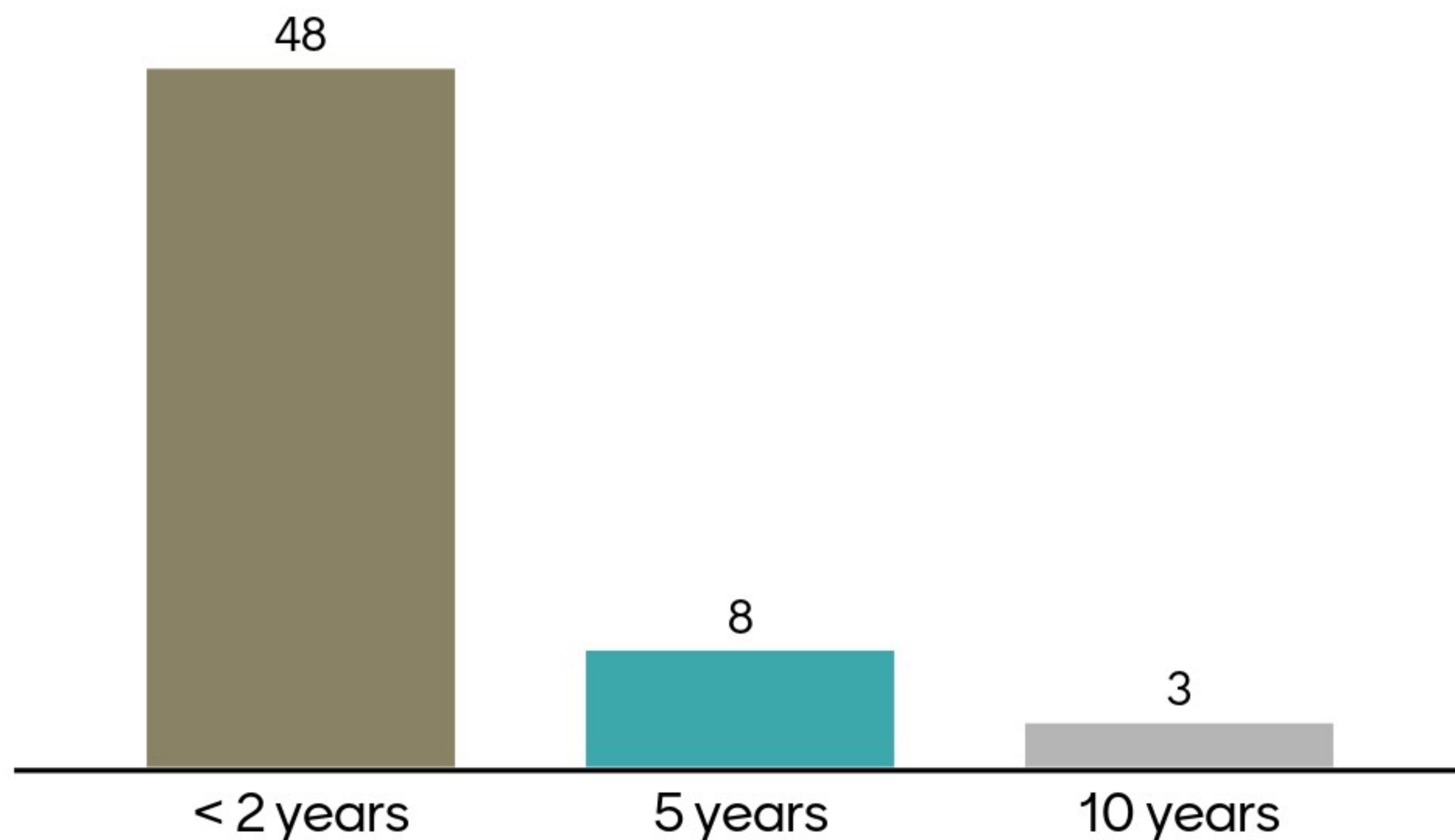




How much rainfall does it commonly take to trigger a postfire debris flow in the first year after a wildfire?

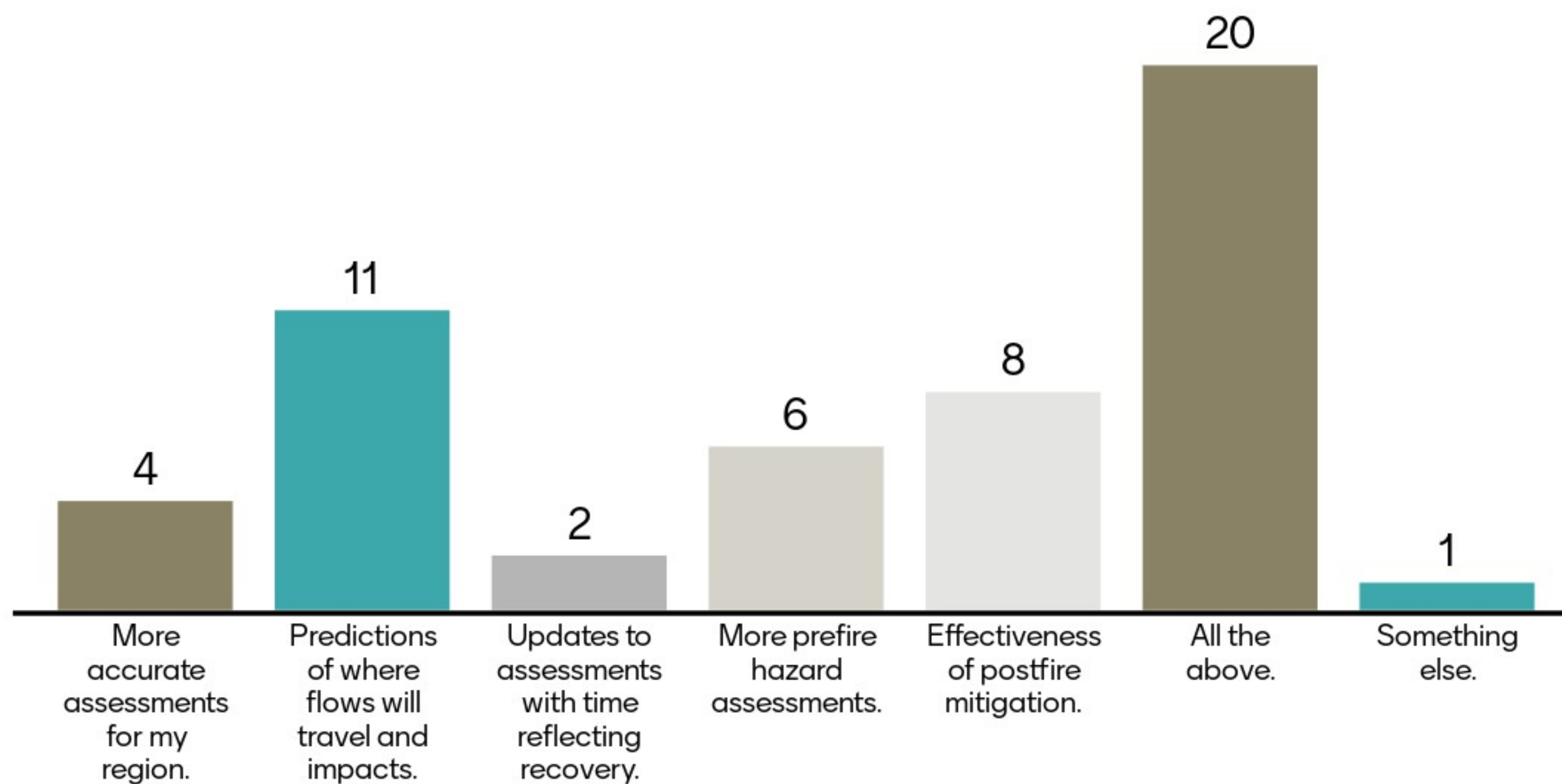


# What is the return interval of rainstorms that commonly trigger postfire debris flows?



This slide is linked to another presentation and is only viewable from the app

# What improvements in postfire predictive capabilities are most important to you?

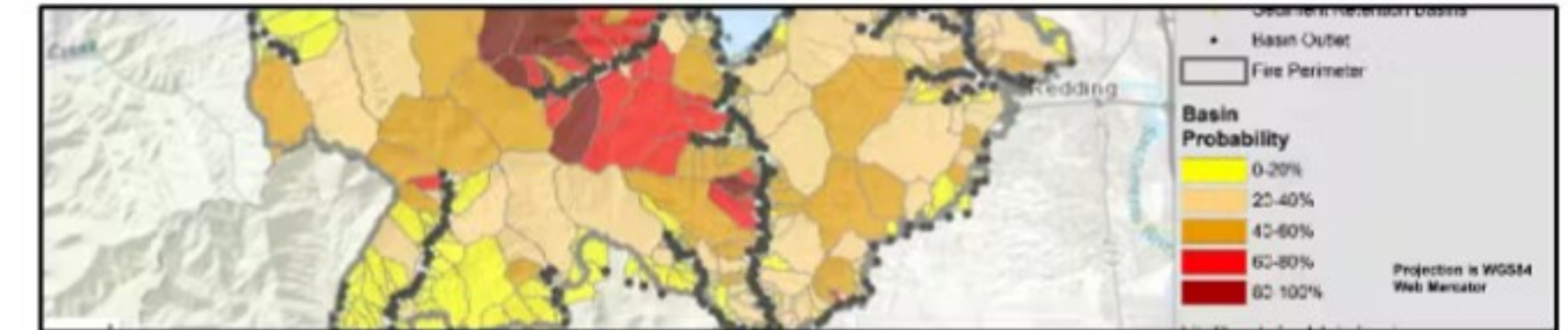


## More information



### Debris-flow hazard assessments

[https://landslides.usgs.gov/hazards/postfire\\_debrisflow/](https://landslides.usgs.gov/hazards/postfire_debrisflow/)



### Story maps of recent debris-flow events

<https://www.usgs.gov/programs/landslide-hazards/science/landslide-and-debris-flow-event-summaries>



### USGS Landslide Hazards Program

<https://www.usgs.gov/programs/landslide-hazards>

#### Landslide Hazards Program

The primary objective of the National Landslide Hazards Program is to reduce long-term losses from landslide hazards by improving our understanding of the causes of ground failure and suggesting mitigation strategies.

### Contact

Jason Kean [jwkean@usgs.gov](mailto:jwkean@usgs.gov)



# Questions and Comments

21 Responses

Are you aware of any conservation district personnel on those private/state lands post-event response teams?

Will you begin using Lidar data for the topographic part of your analysis in the future?

How are nonprofits being involved in this research and resource sharing and on the ground collaboration?

What's the difference between a debris flows, a sediment-laden flow and a hyper-concentrated flow?

What type of mitigation is most effective to address debris flows?

How are debris flow assessments requested?

Re: Graber's work, did he assess other remotely-sensed vegetation indices (e.g., NDVI) and determined LAI was the most informative, or was LAI the only index assessed?

Will the availability of updated volume estimates be dependent on regional data? For instance, will some regions take longer if there's less data?

Can we post the links Mr. Kean provided at the end of his presentation in the chat?

# Questions and Comments

## 21 Responses

Is FEMA recognizing that debris flows are different from flooding?

Would you expect the recovery ratio of 2/3 to hold in a heavily forested area like western Oregon?

Is the leaf area index sensitive to vegetation type (timber vs grass or early recovery species)?

How does the available fuel mass contribute to the problems and is that accounted for?

Something else. A 'primer' for planners and civil engineers on how to use this information in land use and infrastructure planning.

HEC has made significant progress incorporating debris flow modeling in RAS. What utility do you see in using those tools? And how might that compare to the other models you talked about?

Can I download the debris flow model and use it to perform a debris flow analysis? Is there a user manual or documentation available to use the software?

So what happened at the post-fire debris impact zone of the Thomas Fire.? Only 1/2 of the area below the debris-flow impact zone were under mandatory evacuation the southern 1/2 was voluntary-23 died

There seems to be a 'disconnect' between BAER runoff calcs that use something on the order of 10 yr-24 hour rainfall intensity event or whatever the local 'modeled event' is vs the USGS modelled flows



# Questions and Comments

## 21 Responses

Do you recommend a response plan to prevent actions in debris flow cases?

Are the models mature enough to be used for land use and zoning planning?

have you considered using the satellite total precipitable water product to track atmospheric rivers before they impact burn scar areas? There also may be some AR climo...eg where they generally hit

# Thank You

A recording of this webinar will be available at [AfterTheFlames.com](https://AfterTheFlames.com). You will also receive a follow-up email of the recording with links to any resources shared.